

Submission Instructions  
for Labs (and Projects) through  
<http://learn.ou.edu>

CS 2334

Prof. Dean Hougen

School of Computer Science

University of Oklahoma

learn.ou.edu - Windows Internet Explorer

https://learn.ou.edu/index.asp

File Edit View Favorites Tools Help Links DELL Home DELL Office FatWallet learn@OU OU Email DFS

learn.ou.edu

THE UNIVERSITY OF OKLAHOMA

learn.ou.edu

OU HOME

Search OU Web OU People Go

Alerts | iThink Photo Rosters | Course Management Info | OU Libraries | Online Enrollment | Student Services

HOME

**Login**

Username:

Password:

Login

Login Problems?

Before you login, you should review the **Computer Requirements** information. Having the necessary computer set up will enable you to have a more successful experience using this system. After reviewing the computer requirements, perform a **System Check** by clicking on the link on the left side of this page. Instructors and students can find more help information by clicking on the appropriate links on the left hand side.

**LOG IN TROUBLE?**

Your OUNet ID (4+4) might have changed this summer as part of the campus-wide OUNet ID standardization.

- [Retrieve your new OUNet ID](#)
- [Reset your password \(Your password did NOT change\)](#)
- [Learn more about the OUNet ID \(4+4\) Standardization](#)
- Still having trouble? Call OU IT at (405) 325-HELP.

Computer Requirements  
System Check  
Student Help  
Instructor Help




Photo: Gimeno Fountain

Powered by Desire2Learn

Equal Opportunity | Copyright | Disclaimers | OU Campus Photos by Candace Coker

The mission of the University of Oklahoma is to provide the best possible educational experience for our students through excellence in teaching, research and creative activity, and service to the state and society.

Internet 100%

1. Enter you OU4x4 and the corresponding password and click "Login" button.

University of Oklahoma - Windows Internet Explorer

http://learn.ou.edu/d2l/orgTools/ouHome/ouHome.asp?ou=6605

File Edit View Favorites Tools Help Links DELL Home DELL Office FatWallet learn@OU OU Email DFS

My Home Locker D2L FAQ Thursday January 22, 2009

# learn.ou.edu

Welcome, [REDACTED] Logout

### My Settings

Welcome, [REDACTED]

**My Settings**

- Preferences
- Homepage
- Profile
- View my progress
- Locker

### News

#### Add/Drop Changes to your D2L Courses

**STUDENTS:** All add/drops are up to date beginning this morning. There was a problem with the add/drop file not being received by the system.

In future - all add/drops take 24 hours to change on D2L from the time you changed it on enroll.ou.edu.

Michelle A. Davis, M.Ed.  
IT-LMS Administrator  
learn@ou.edu

### My Courses

Course	Actions
3 - SPRING 2009	
COMPUTER SCIENCE	
<a href="#">C S 2334-010 SP09 - PROG STRUC/ABSTRACT</a>	
<a href="#">C S 2334-011 SP09 - LAB-C S 2334-010</a>	
<a href="#">C S 2334-012 SP09 - LAB-C S 2334-010</a>	

### D2L HELP

Click the using D2L

- COMPUTE
- INSTRUCT
- STUDENT
- D2L ISSU
- USEFUL L

The D2L FAQ links (Instructor Help, Student Help, Known Issues, Useful Links) are now located on the left side menu as well as the top navbar menu above the learn.ou.edu logo.

2.You should see a screen similar to this.

3. Click on this link to the left (DO NOT click on the links for LABs).

Done Internet 100%

University of Oklahoma :: - Windows Internet Explorer

http://learn.ou.edu/d2l/orgTools/ouHome/ouHome.asp?d2l\_stateGroups=grid~gridpagenum-

File Edit View Favorites Tools Help Links DELL Home DELL Office FatWallet learn@OU OU Email DFS

My Home Locker Email Welcome, Muhammad Jan 22, 2009

# learn.ou.edu

## C S 2334-010 SP09 - PROG STRUC/ABSTRACT

Course Home | Content | Links | Discussions | Chat | **Dropbox** | Quizzes | Grades | Roster Edit Course | Logout

### Upcoming Events

Today

No events

Upcoming

No events

### Updates

Role Switch

### News

No items found.

Main Content

4. Click on the Dropbox link. It should take you to the list of available dropboxes.

Done Internet 100%

University of Oklahoma .: - Windows Internet Explorer

http://learn.ou.edu/d2l/orgTools/ouHome/ouHome.asp?d2l\_stateScopes=OrgUnitSession~Gri

File Edit View Favorites Tools Help Links DELL Home DELL Office FatWallet learn@OU OU Email DFS

My Home Locker Email Welcome, Muhammad Jan 22, 2009

**learn.ou.edu** C S 2334-010 SP09 - PROG STRUC/ABSTRACT

Course Home | Content | Links | Discussions | Chat | Dropbox | Quizzes | Grades | Roster Logout

**Instructions**

- Use this page to submit files to Dropbox folders and to view feedback on your submissions to the Dropbox, if applicable.
- To see all the files that you have uploaded to each Dropbox folder, click the **History** icon.
- To submit a file to a Dropbox folder, click the folder name.
- To open a file, click the file name.

**Dropbox Folders**

Folder List History

Dropbox Folders

20 per page

Folder	Score	Submissions	Feedback
<b>Project Designs</b>			
<a href="#">Project 1 Design</a>		0	-
<a href="#">Project 2 Design</a>		0	-
<a href="#">Project 3 Design</a>		0	-
<a href="#">Project 4 Design</a>		0	-
<a href="#">Project 5 Design</a>		0	-
<b>Projects</b>			
<a href="#">Project 1</a>		0	-
<a href="#">Project 2</a>		0	-
<a href="#">Project 3</a>		0	-
<a href="#">Project 4</a>		0	-
<a href="#">Project 5</a>		0	-
<b>Labs</b>			
<a href="#">Lab 1</a>		0	-
<a href="#">Lab 2</a>		0	-
Lab 3		0	-
Closed Sep 19, 2008 2:30 PM			
Lab 4		0	-
Closed Oct 3, 2008 2:30 PM			
Lab 5		0	-
Closed Oct 17, 2008 2:30 PM			

5. Click on the link for the appropriate Lab (e.g. Lab 1, if you are submitting material for Lab 1).

Done Internet 100%

University of Oklahoma .: - Windows Internet Explorer

http://learn.ou.edu/d2l/orgTools/ouHome/ouHome.asp?d2l\_stateScopes=OrgUnitSession~Gri

File Edit View Favorites Tools Help Links DELL Home DELL Office FatWallet learn@OU OU Email DFS

My Home Locker Email Welcome, Muhammad Jan 22, 2009

# learn.ou.edu

## C S 2334-010 SP09 - PROG STRUC/ABSTRACT

Course Home | Content | Links | Discussions | Chat | Dropbox | Quizzes | Grades | Roster Logout

### Instructions

Use this page to submit files to this Dropbox folder.

### Submit Files - Lab 1

[Folder List](#) [Submit Files](#)

Cancel Submit

#### Folder Information

[Hide Folder Information](#)

Folder: Lab 1


Instructions: Late submissions lose 20% per day.

Deadline: Jan 23, 2009 1:30 PM

Attached Files:

#### Submit Files

\* Files: [Add a File](#)

Comments: 

Cancel Submit

6. Click on this link "Add a File" to add a file.

Done Internet 100%

University of Oklahoma - Windows Internet Explorer

http://learn.ou.edu/d2l/orgTools/ouHome/ouHome.asp?d2l\_stateScopes=OrgUnitSession~Gri

File Edit View Favorites Tools Help Links DELL Home DELL Office FatWallet learn@OU OU Email DFS

My Home Locker Email

learn.ou.edu C S 2334-010 SP09 - PROG STRUC/ABSTRAC

Course Home | Content | Links | Discussions | Chat | Dropbox | Quizzes | Grades | Roster

Instructions

Submit Files - Lab 1

Folder List Submit Files

Cancel Submit

Folder Info

Hide Folder

Folder

Instructions

Deadline

Attached Files

Submit File:

\* Files:

Comments:

Cancel

Cancel

Upload

Upload files from your computer.

Submit a File

Please select the file(s) to upload from your computer:

1.  Browse...

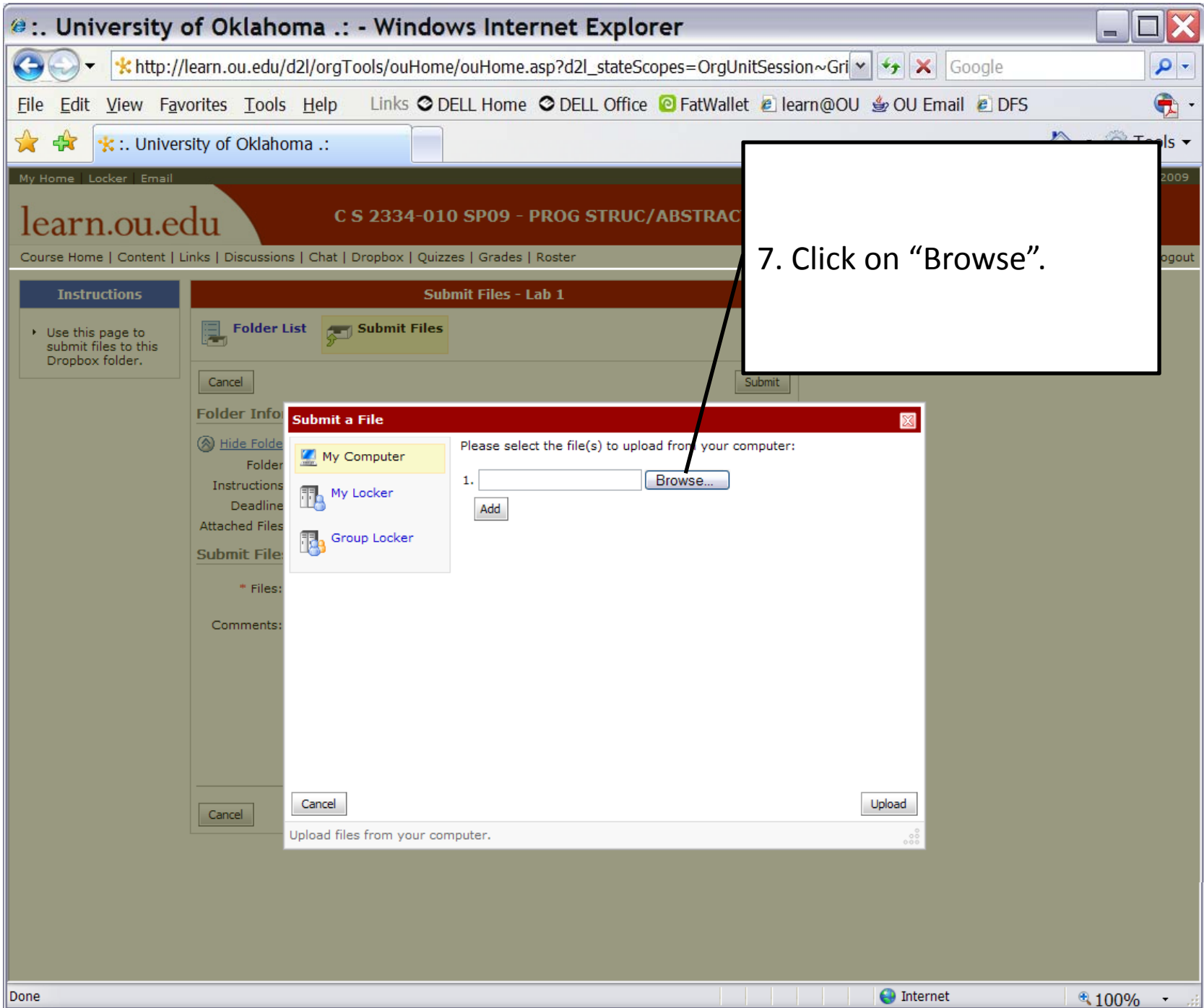
Add

My Computer

My Locker

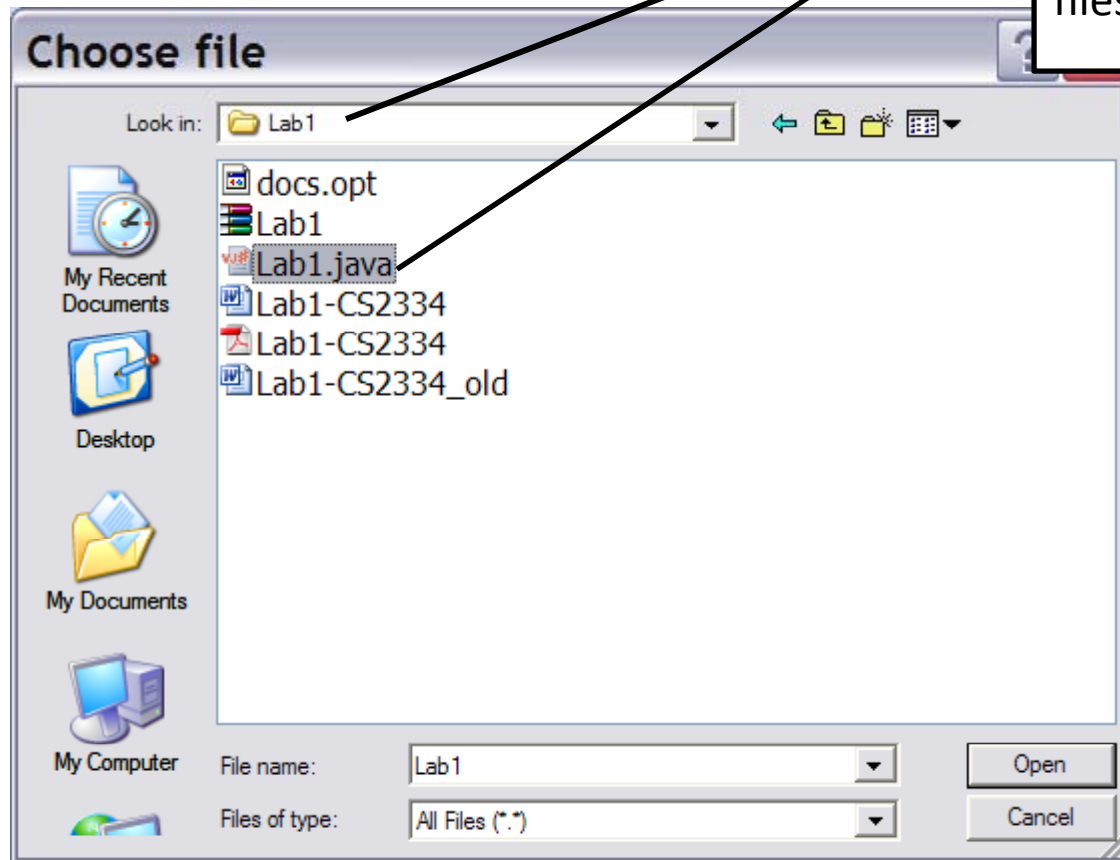
Group Locker

Done Internet 100%



7. Click on "Browse".

8. Select the location and name of the file for the Lab or the project you are trying to submit (You may have to choose multiple files, if required).





The screenshot shows a Windows Internet Explorer browser window displaying the University of Oklahoma's LMS interface. The address bar shows the URL: `http://learn.ou.edu/d2l/orgTools/ouHome/ouHome.asp?d2l_stateScopes=OrgUnitSession~Gri`. The page title is "C S 2334-010 SP09 - PROG STRUC/ABSTRACT". The main content area is titled "Submit Files - Lab 1" and includes a "Folder List" and "Submit Files" section. A "Submit a File" dialog box is open, prompting the user to "Please select the file(s) to upload from your computer:". The dialog shows a list of folders: "My Computer", "My Locker", and "Group Locker". The "My Computer" folder is selected, and a file path is shown: "1. C:\Documents and Settings\ [Browse...]". An "Add" button is visible next to the file path. The dialog also has "Cancel" and "Upload" buttons. A callout box points to the "Add" button with the following instructions:

9. Click "Add", if submitting multiple files.  
10. When done selecting all the required files, click Upload.

University of Oklahoma - Windows Internet Explorer

http://learn.ou.edu/d2l/orgTools/ouHome/ouHome.asp?d2l\_stateScopes=OrgUnitSession~Gri

File Edit View Favorites Tools Help

My Home Locker Email Welcome, Muhammad Jan 22, 2009

# learn.ou.edu

## C S 2334-010 SP09 - PROG STRUC/ABSTRACT

Course Home | Content | Links | Discussions | Chat | Dropbox | Quizzes | Grades | Roster Logout

### Instructions

Use this page to submit files to this Dropbox folder.

### Submit Files - Lab 1

Folder List Submit Files

Cancel Submit

#### Folder Information

[Hide Folder Information](#)

Folder: Lab 1

Instructions: Late submissions lose 20% per day.

Deadline: Jan 23, 2009 1:30 PM

Attached Files:

#### Submit Files

\* Files: Add a File

Lab1.java (2.92 KB)

Comments:

Cancel Submit

11. Make sure appropriate files are shown here.

12. If everything looks OK, click "Submit".

Done Internet 100%